

Bayridge Secondary School

**Return to School information for our
B.S.S. Families**

Updated: August 27th, 2020

Before students arrive:



- Review the [LDSB F.AQ.'s for Families](#)
- Review this information slideshow as a family with the students in your household
- Check with Triboard Transportation to verify your bus pickup/drop off time if you do not know this information.
- Did you know you can view your student busing information for the 20-21 school year on <http://triboard.ca>? Find out your bus #, pick up/drop off times, and stop location by scrolling to the 2020-2021 Student Bus Details tab. Your OEN is available on your last report card.

Welcome from the B.S.S. Admin!

(and BLAZER too!)



Ms. Highet
Principal



Ms. Robb
Vice-Principal



Ms. Slate
Vice-Principal



B.S.S. Staggered Start Information



September 3, 2020

- The first day of school is a remote learning day for all students. All students are encouraged to review the LDSB Health & Safety Protocols through our Minds On Line Learning Portal. You will receive additional information prior to the beginning of school.
- Grade 9 students will be contacted by their Period A Teacher to let them know their class placement for the first day and designated entrance/exit..
- Students in School to Community will be contacted by their teachers.

September 4, 2020

- Grade 9 students attend school for orientation and instruction and receive their full school year timetables.
- Grade 10-12 students will be contacted by their Period A Teacher to provide necessary information for their first day and designated entrance/exit.

September 8, 2020

- **ALL GRADE 9-12 STUDENTS ATTEND SCHOOL**

GRADE 9s Attending BSS

- All Grade 9s coming to B.S.S. are invited to our Virtual Orientation to Gr.9 on **September 1st from 9 – 11 a.m.** Connection Crew Leaders will call Gr. 9 families to explain how students can join. This will be a VIRTUAL session, where students will work through orientation activities, meet other Grade 9 students and learn about the transition to high school.
- Grade 9 students will find out their class placements via phone call on **September 3.** Your first class should be the same as on your timetable sent in the summer (English or Geography). Our Student Services Team will be available to help with any timetable adjustments for the remainder of the school year once students have their first day schedules.



What should I bring to B.S.S.?

- Backpack or bag
- Refillable Water Bottle
- Binder with some paper
- Writing Utensils
- Calculator (if you have one)
- Clothes for Phys. Ed. (if applicable)
- Lunch and snacks for the day



* If you have an electronic device (laptop/chromebook/ipad) you may bring this to school. You do not have to purchase one as we have these for students to use while at B.S.S..

Remember **LESS IS BEST** as you will not be assigned a locker this year.

Grade 10-12 Students Attending in Person

- Schedules have been revised based on our return to school model and latest staffing.
- Our Student Services Team is back in the office working on schedules. They are ready to assist families with updating/adjusting course requests.
- Student services staff will set up **stations** outside the school for face to face timetable assistance and support on **Thursday, September 3 and Friday, September 4 between 9 a.m. – 2 p.m.** No appt needed.

If you previously made an appointment on our on-line booking system, we will contact you – you do not need to re-book!

Your journey to school

If you take the bus:



- Check the [Triboard site](#) if you are not aware of your pickup and drop off times.
- Read the Triboard update for Families. This will share information like assigned seating and bus protocols.
- If you arrive to school prior to 8:15 am, you will proceed to the library until the warning bell rings. You will then proceed directly to your classroom.
If you arrive after 8:15 am, you will proceed directly to your first period classroom through your designated entry door (as communicated by your period one teacher)

Your journey to school

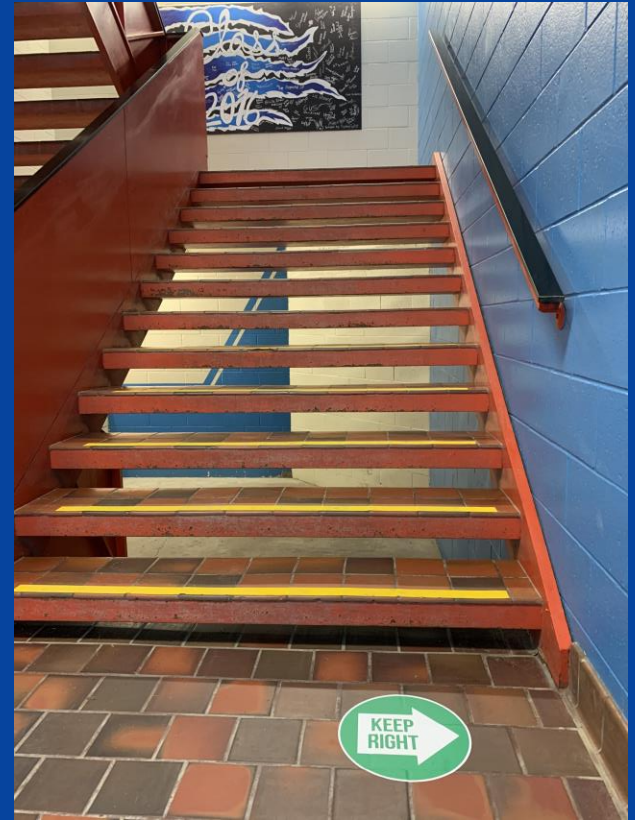
If you walk/bike to school:

- School starts at 8:30 am at B.S.S.
- You should arrive **no earlier than 8:15 am** unless you are arriving by school bus.
- When you arrive, please enter the building through your designated entry door (your teacher will communicate this with you before the first day of school).
- Go directly to your classroom.



Hallways & Lockers

- Hallways are for walking to and from classes or into and out of the school. Please do not visit with friends at this time. No stopping. No sitting in the bear pit or social science bear pit.
- We will not be using lockers to start the school year. Please take all your belongings to your classroom.



Examples what you will see at BSS



Period A Daily Timetable

8:30 - 9:45: Instructional Time

9:45 - 9:55 : Break * Note breaks will be staggered

9:55 - 11:10: Instructional Time

11:10 - 11:55: Lunch

11:55 - 1:10: Instructional Time

1:10 - 1:22: Break * Note breaks will be staggered

1:22 - 2:37: Instructional Time



What will my classroom look like?

- Desks will be spread out in the classroom to create as much distance between students as possible.
- You will have one assigned seat all day that will be yours.
- All surfaces will be kept clear so that they can be regularly wiped down.
- You will need to wipe down Chromebooks and ipads before and after you use them.
- We will have hand sanitizer in each classroom for regular use, in addition to you washing your hands in our washrooms.
- You will not be changing classes throughout the day; you will remain in your classroom or learning area all day.



What do I do for lunch?

- Students will have the choice to eat in their classroom or go outside/off property at lunch time.
- Our cafeteria and vending machines will not be accessible. Students can only eat their own food in the school so should pack a lunch if planning on staying in the school!

Students who leave property at lunch time should keep physical distance.

Where will we go if we are outdoors?

Our Green spaces will be used, classes can go for a walk, learn outside, etc. Staff will conduct classes outside as much as possible. Students can physically distance and remove masks when outside.



What will the end of the day look like?

- The School ends at 2:37 pm at B.S.S.
- We will have a staggered exit to reduce congestion in the hallways.
- Students will be asked to exit the building through their designated doors.
- **Picking up Students:** If you are picking up the student(s) in your home you may want to arrange a meeting place that is a safe and less busy place to meet than at the front of the school.



How can we stay connected?



Visit the L.D.S.B. Website - www.limestone.on.ca

Follow the L.D.S.B. on Twitter - <https://twitter.com/limestonedsb>

Visit the BSS Website - <https://bayridgess.limestone.on.ca/>

Follow BSS on Twitter - [@BayridgeSS_LDSB](https://twitter.com/BayridgeSS_LDSB)



Let's take care of each other!

Returning to school can be an anxious time for everyone. This year is no different but the added anxiety and worry surrounding COVID-19 can take an extra toll on all of us. The Children's Hospital of Eastern Ontario has an excellent resource for parents regarding back to school during this Pandemic. You can find it [here](#).



